



GAT MONTHLY MEMBERSHIP PROGRESS REPORT

Results as of: 12/31/2022

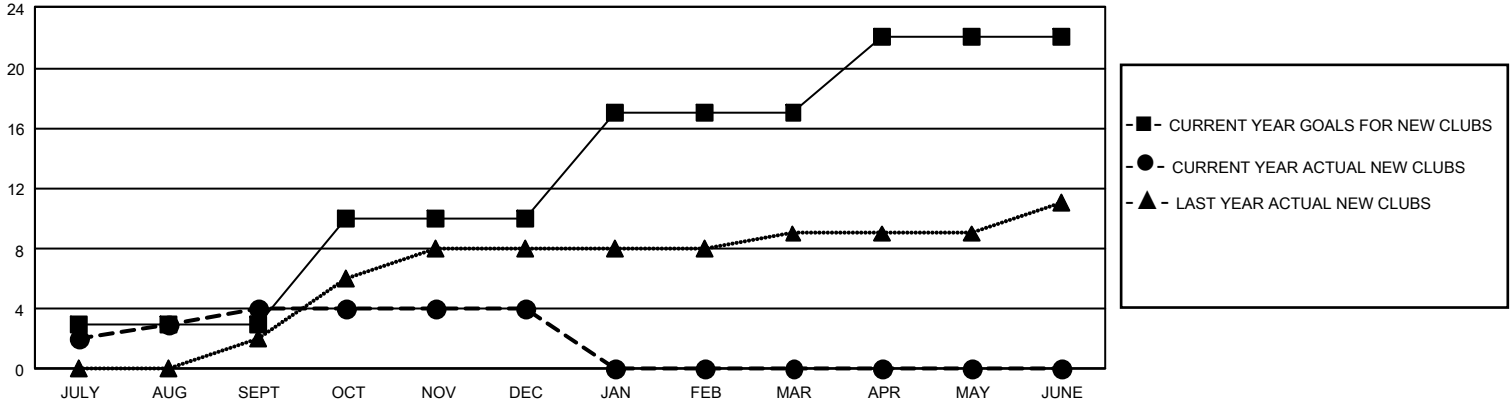
GMT Constitutional Area 2, Group B

REPORT DOES NOT INCLUDE CLUBS IN UNDISTRICTED AREAS.

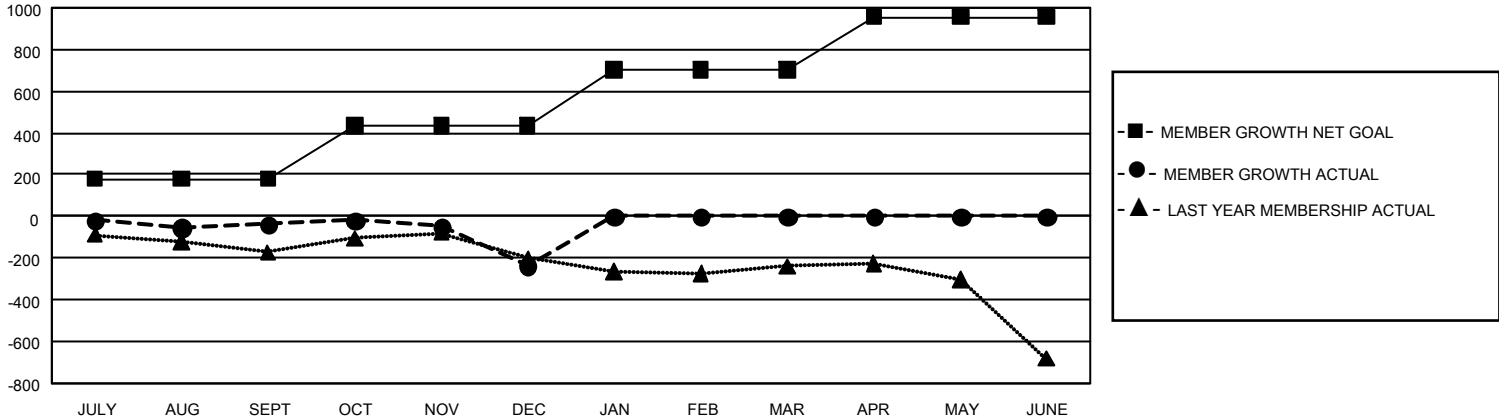
Clubs			
RESULTS FOR 2022-2023			
QUARTER	NEW CLUB GOAL	NEW CLUBS	DROPPED CLUBS
JULY/AUG/SEPT	9	4	4
OCT/NOV/DEC	21	0	6
JAN/FEB/MAR	21	0	0
APR/MAY/JUNE	15	0	0

Members			
RESULTS FOR 2022-2023			
QUARTER	MEMBER GROWTH NET GOAL	MEMBER GROWTH ACTUAL	DROPPED MEMBERS ACTUAL (including transfers)
JULY/AUG/SEPT	180	424	403
OCT/NOV/DEC	255	610	744
JAN/FEB/MAR	270	0	0
APR/MAY/JUNE	250	0	0

GOALS AND ACTUAL NEW CLUBS CUMULATIVE



GOALS AND ACTUAL MEMBERS CUMULATIVE



DROPPED CLUBS: 10	294 CLUBS OF 695 ADDED 1 OR MORE NEW MEMBERS	GENDER DISTRIBUTION	
		MALE 9,936 (63.77%) FEMALE 5,643 (36.22%) NON BINARY 0 (0.00%) PREFER NOT TO ANSWER 1 (0.01%)	
DROPPED MEMBERS		TOTAL FAMILY UNIT MEMBERS 2,905	
DECEASED 144 CLUB CANCELLED 9 OTHER 994 TOTAL 1,147	CLICK HERE FOR CUMULATIVE MEMBERSHIP DATA	FAMILY MEMBERS PAYING HALF DUES 1,502	